



Joe had to Mow

Early Reader No. 19

Story by Jennifer Cooper-Trent
Illustrations by Anthony Mitchell

© Fantastic Phonics.
www.early-reading.com

No part of this Publication can be reproduced without a license



Page 1a

Single Syllable Words

Punctuation - the exclamation mark (!) adds emphasis to the word or sentence.

Phonic Decoding - explain how 'mow', 'low' share a common sound of '..ow'

Explain the variation 'Joe', where the silent 'e' makes the long Sound 'o'

Explain the variation 'high', where the Sound 'igh' makes the long Sound 'i'.

Long Vowel : 'o' as in 'mow'

Try These New Words

Joe mow Oh! bee
tree by high said



Joe had to mow.

 Cut 'n
Staple

Page 2a



Joe had to mow
high and low.

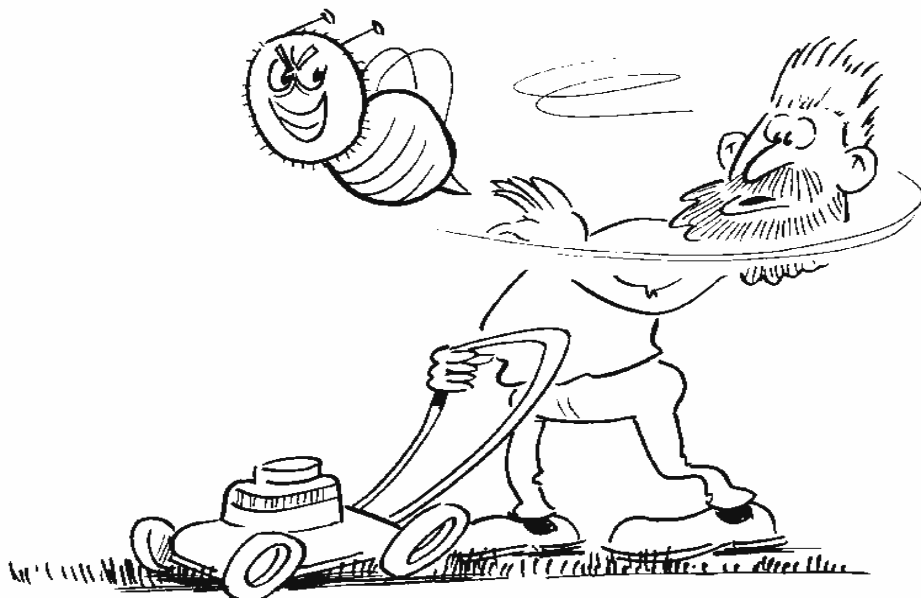


Joe had to mow
by the tree.

✂
Cut 'n
Staple

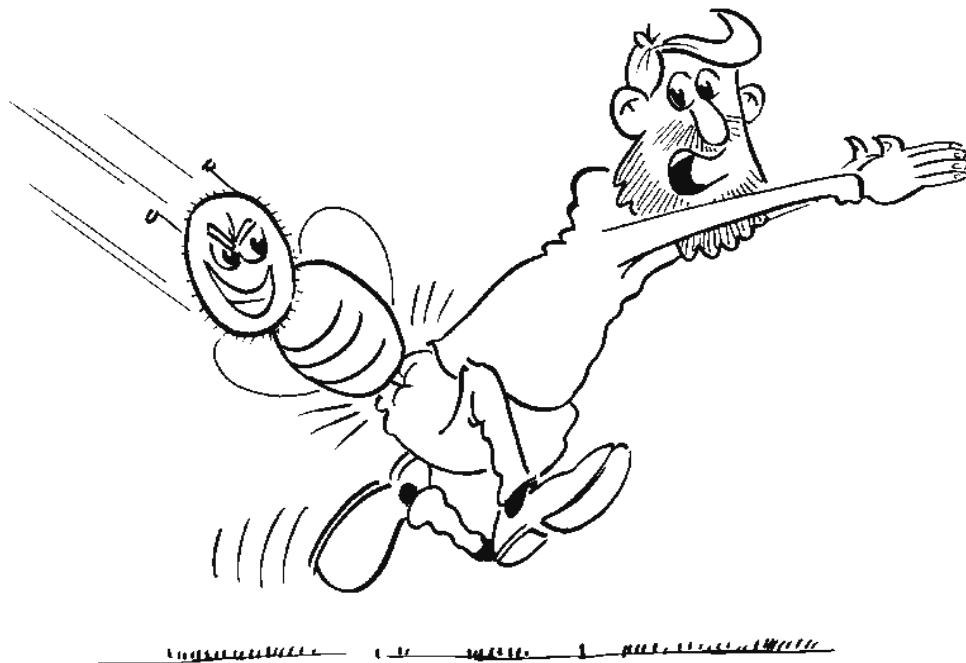


Joe had to mow
by a bee.

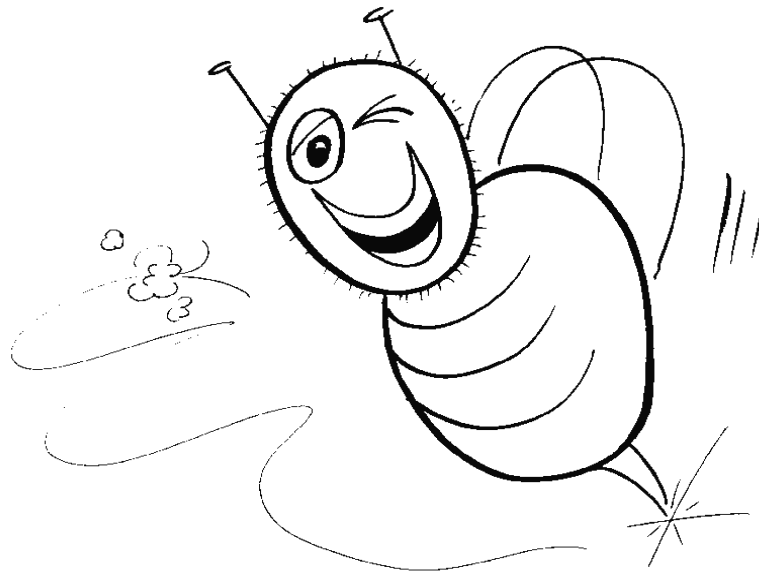


Buzz, buzz went
the bee.

✂
Cut 'n
Staple



"Oh no!", said Joe.



Buzz, buzz went
the bee.

✂
Cut 'n
Staple

Page 5a



Oh no! Joe ran
high and low.

Extra Words

row sow bow grow tow
toe foe hoe

Comprehension

1. What did Joe have to do?
2. Joe mowed high. Where else did he mow?
3. What did Joe have to mow near?
4. What sound does a bee make?
5. What did the bee do to Joe?



Cut 'n
Staple

Complete the sentences with these words.

mow, low, Joe, mow, tree

Joe had to ___ high and ___.

___ had to ___ by a _____.